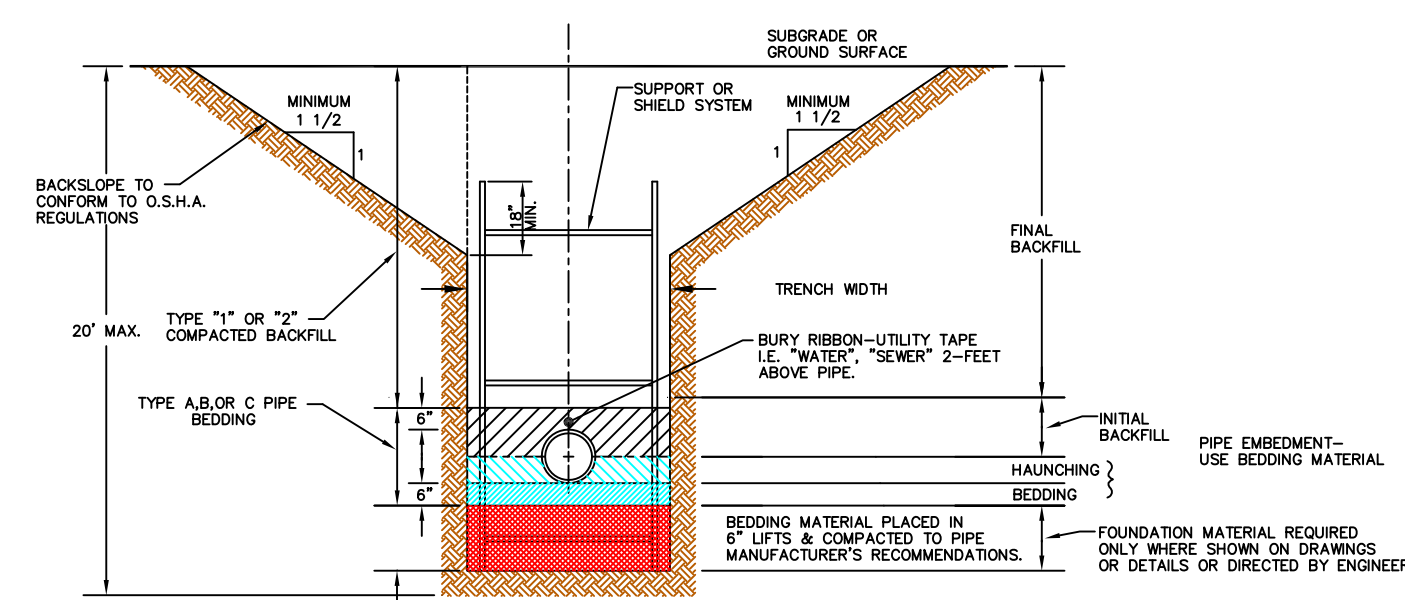
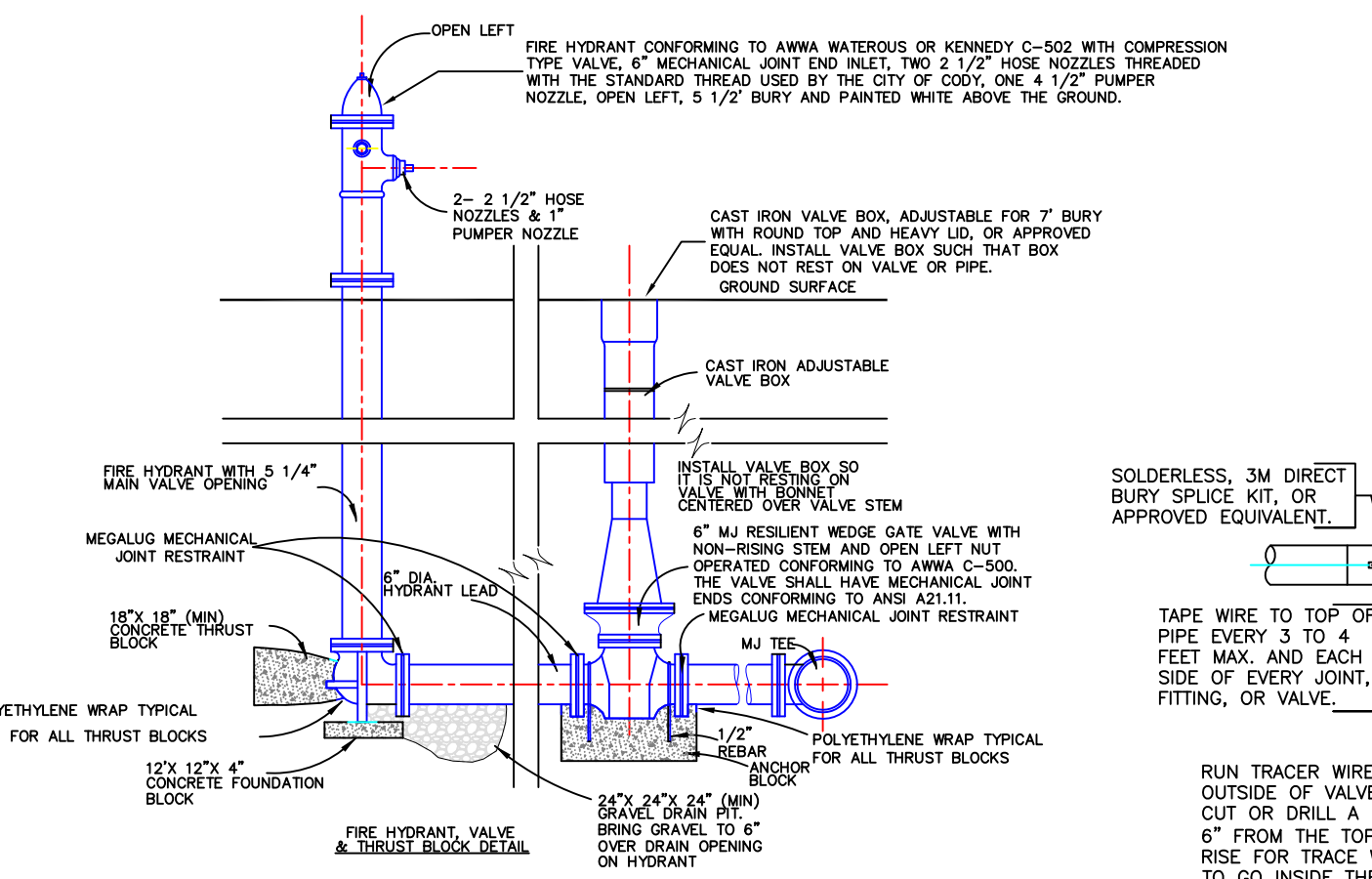


FITTING SIZE	TEES & PLUGS		90° BENDS		45° BENDS & WYES		REDUCERS & 22 1/2° BENDS		11 1/4° BENDS	
	A	B	A	B	A	B	A	B	A	B
4"	11-7"	11-2"	11-8"	11-8"	11-8"	11-8"	11-7"	11-7"	11-6"	11-6"
6"	2-0"	1-11"	2-5"	2-2"	1-10"	1-7"	1-9"	1-9"	1-8"	1-8"
8"	2-8"	2-6"	2-5"	2-2"	2-5"	2-1"	1-9"	1-6"	1-6"	1-6"
10"	3-2"	3-3"	4-0"	3-10"	3-10"	3-10"	2-2"	1-11"	1-8"	1-8"
12"	4-0"	3-10"	4-8"	4-8"	3-8"	3-3"	2-3"	2-3"	2-2"	1-9"
14"	5-5"	3-10"	6-4"	4-11"	4-9"	3-5"	2-5"	2-5"	2-5"	1-6"
20"	9-0"	9-0"	6-0"	6-0"	4-0"	4-0"	3-0"	3-0"	3-0"	2-0"
24"	6-0"	6-0"	7-0"	7-0"	6-0"	4-8"	3-0"	3-0"	3-0"	2-0"
30"	7-6"	7-6"	6-0"	6-0"	6-3"	6-3"	4-9"	4-6"	3-3"	3-3"

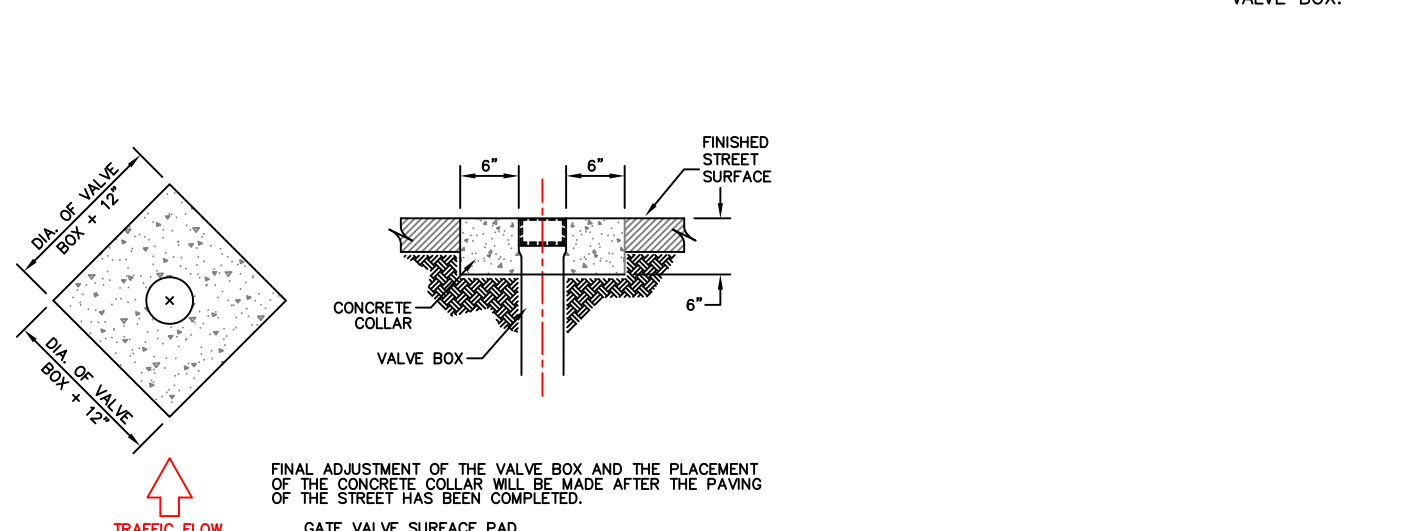
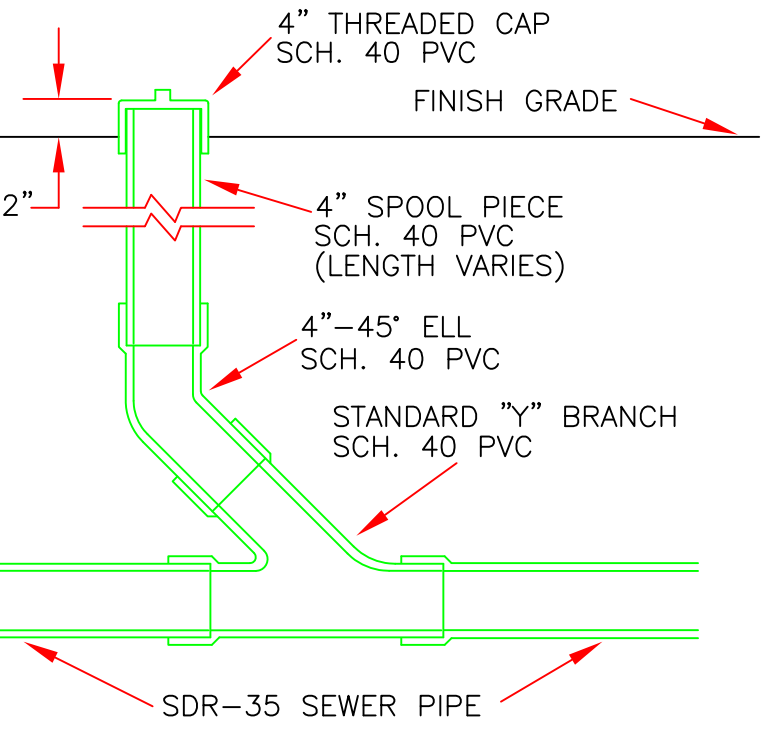
- NOTES:
- FITTINGS TO BE SEPARATED FROM BLOCKS WITH AN APPROVED BOND BREAKER, SUCH AS POLY WRAP.
 - ALL BLOCKS TO BEAR AGAINST UNDISTURBED MATERIAL.
 - DESIGN IS BASED ON 150 PSI MAIN PRESSURE AND 2000 PSF SOIL BEARING CAPACITY.



DIKE BEDDING
TYPE A - WELL GRADED MATERIAL WITH A MAXIMUM SIZE OF 3/4-INCH MAXIMUM PLASTICITY INDEX OF 6, AS DETERMINED BY ASTM D 2922. TYPICAL TRENCH DETAIL

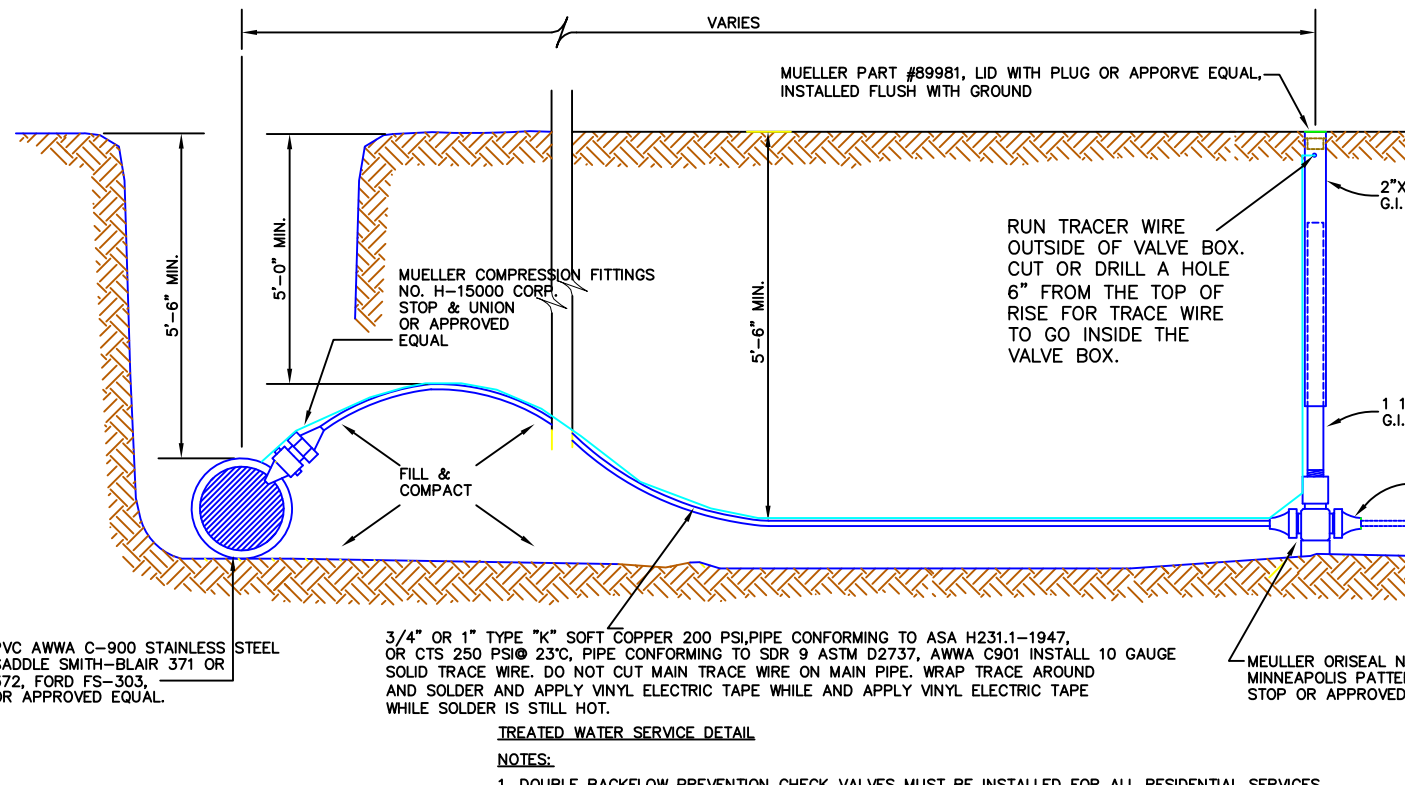


CLEANOUT DETAILS
N.T.S.

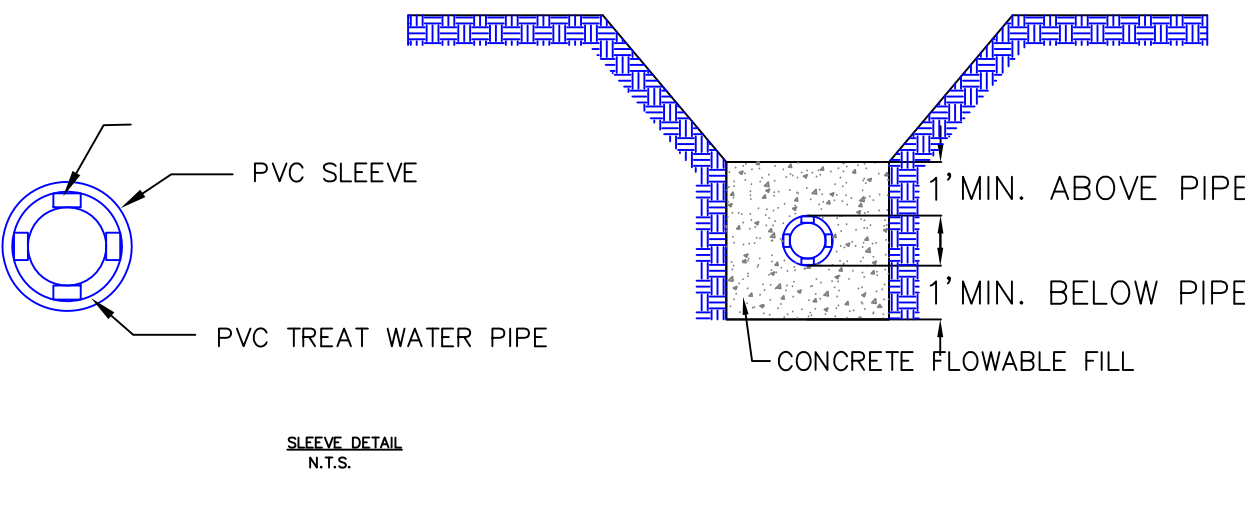


TREATED WATER AND RAW WATER NOTES

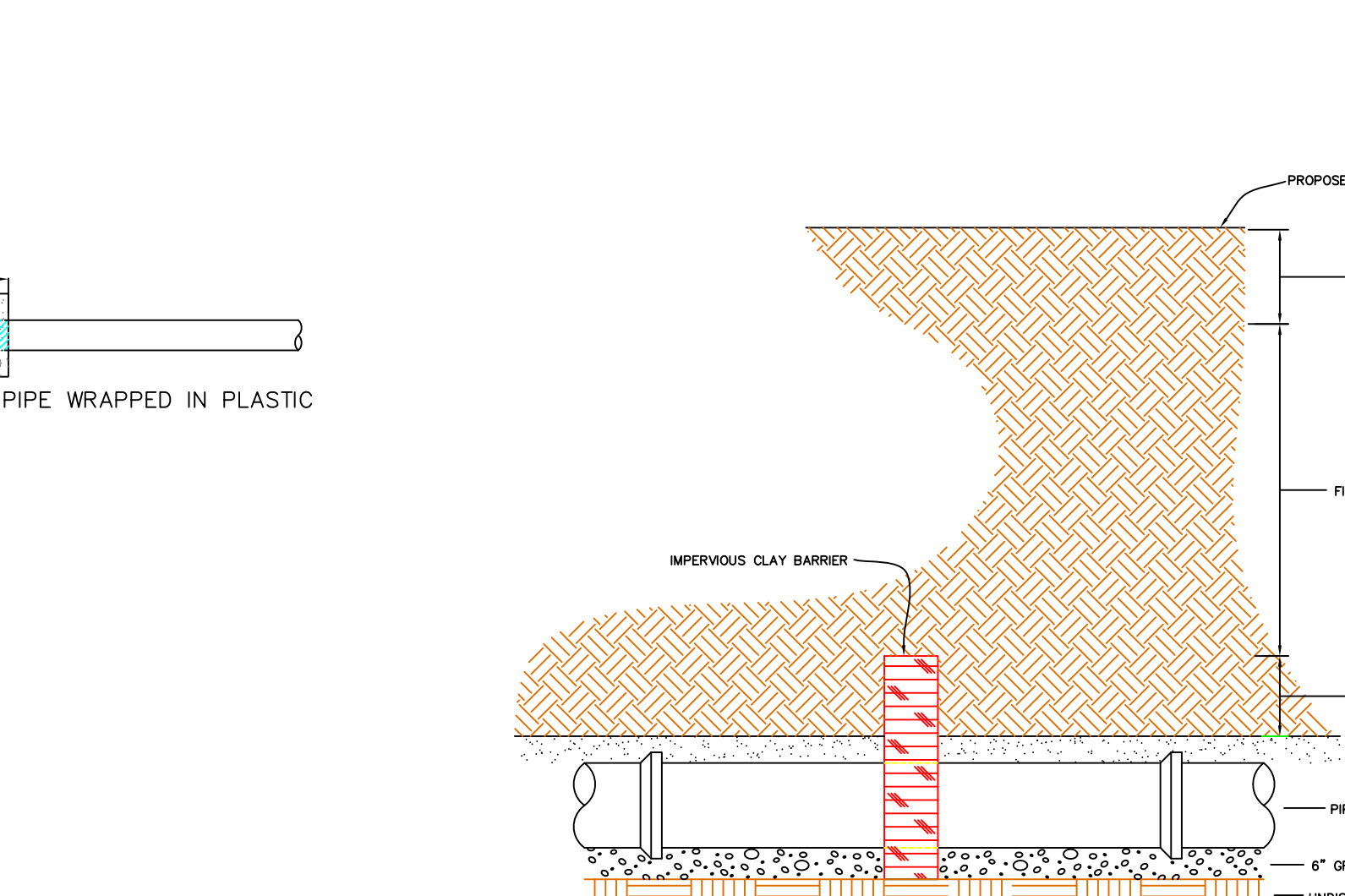
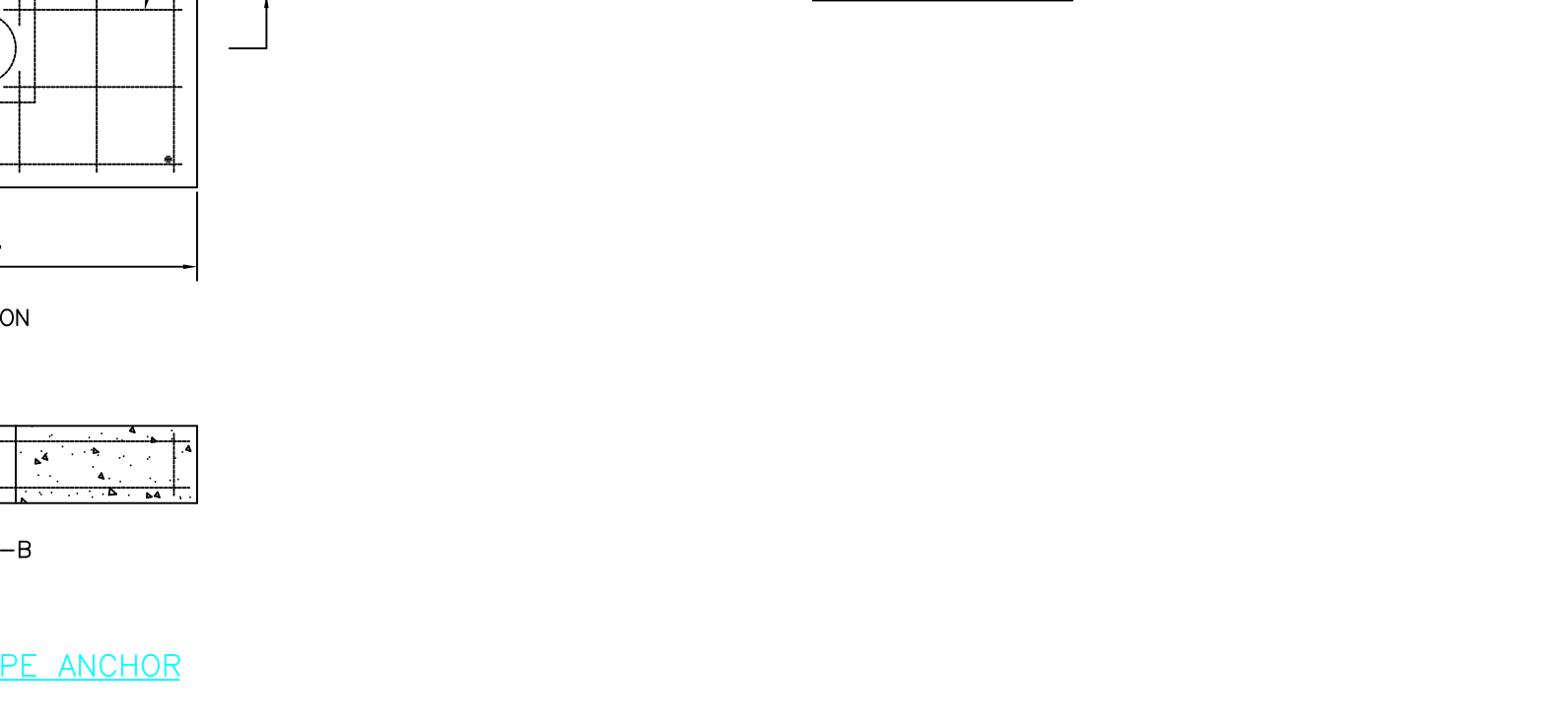
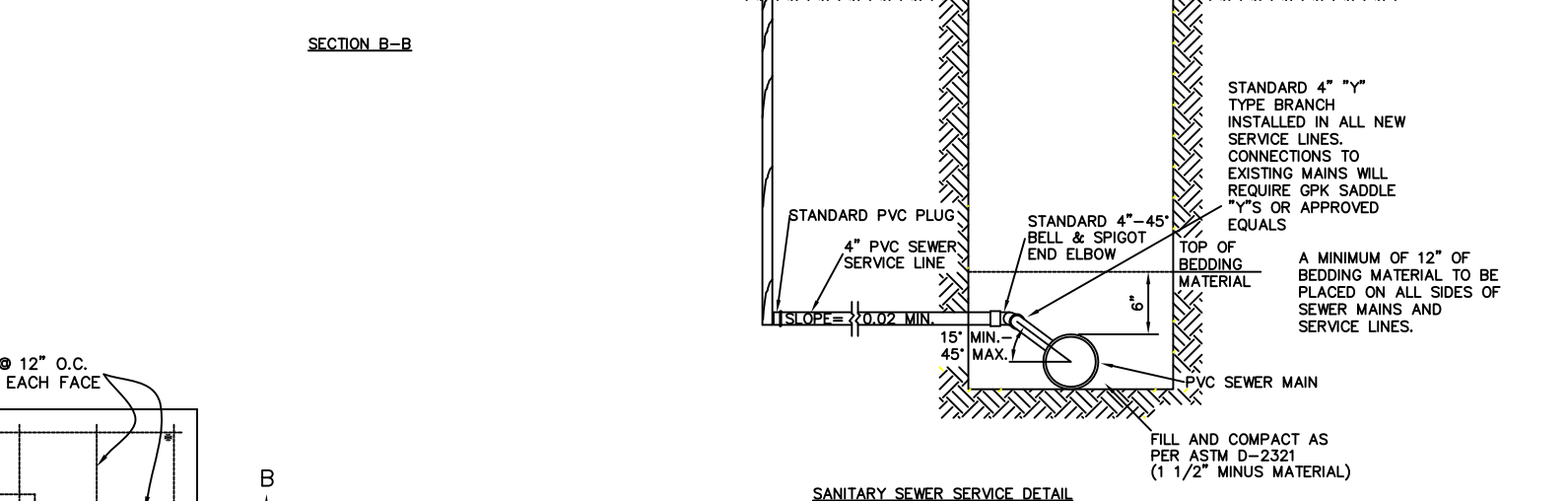
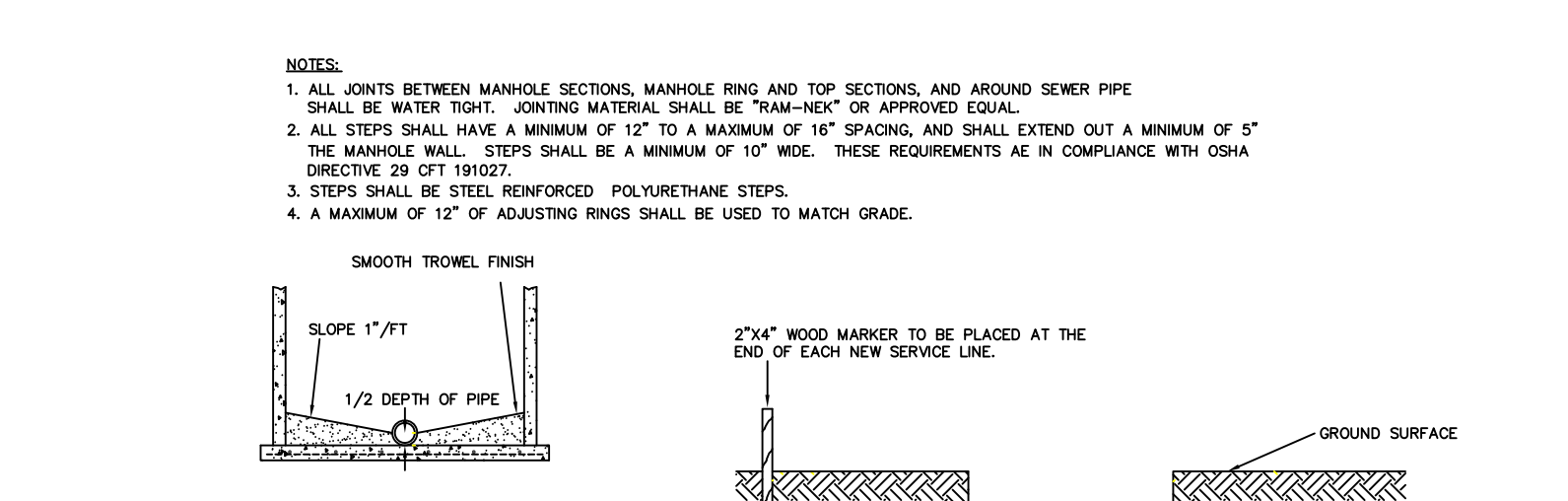
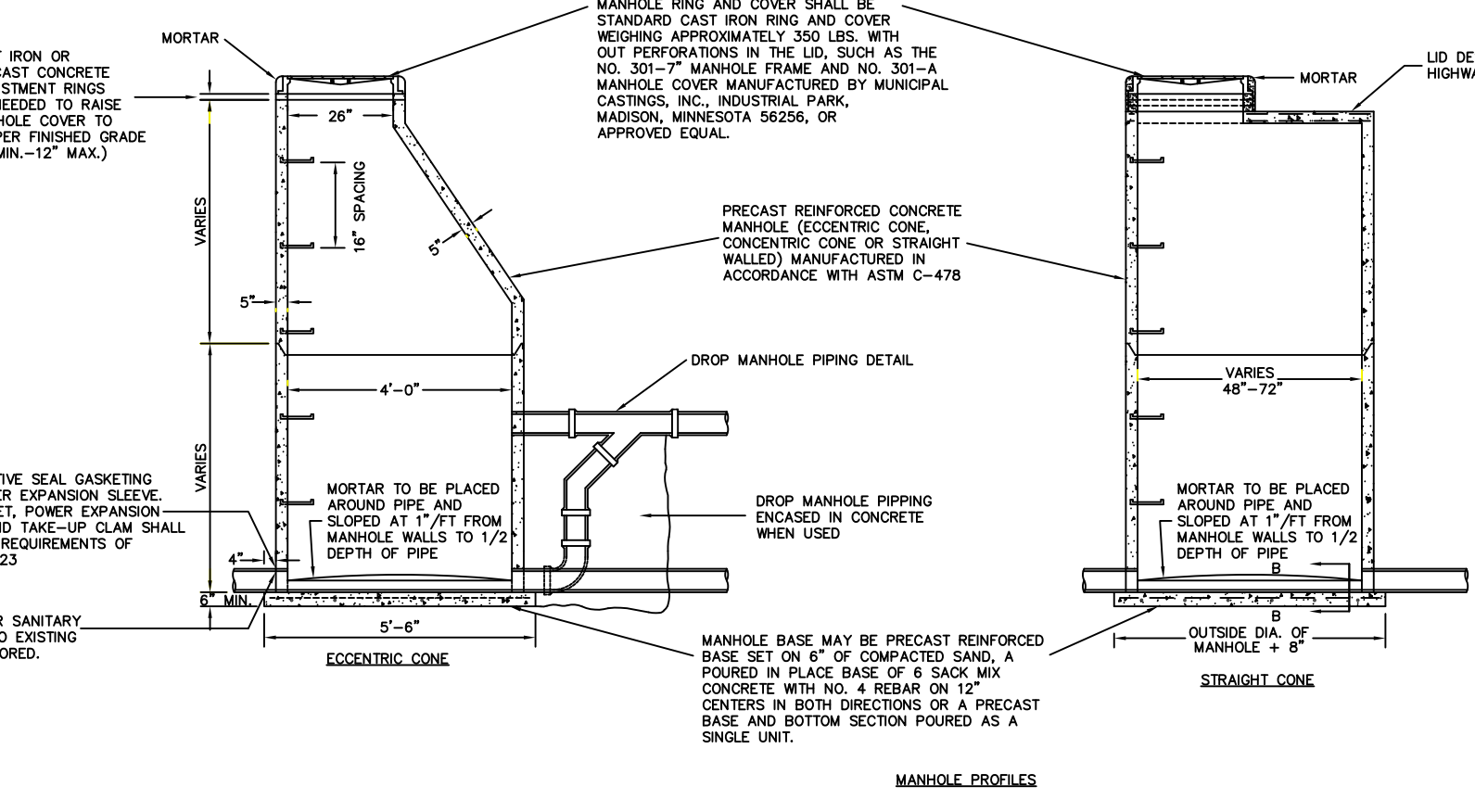
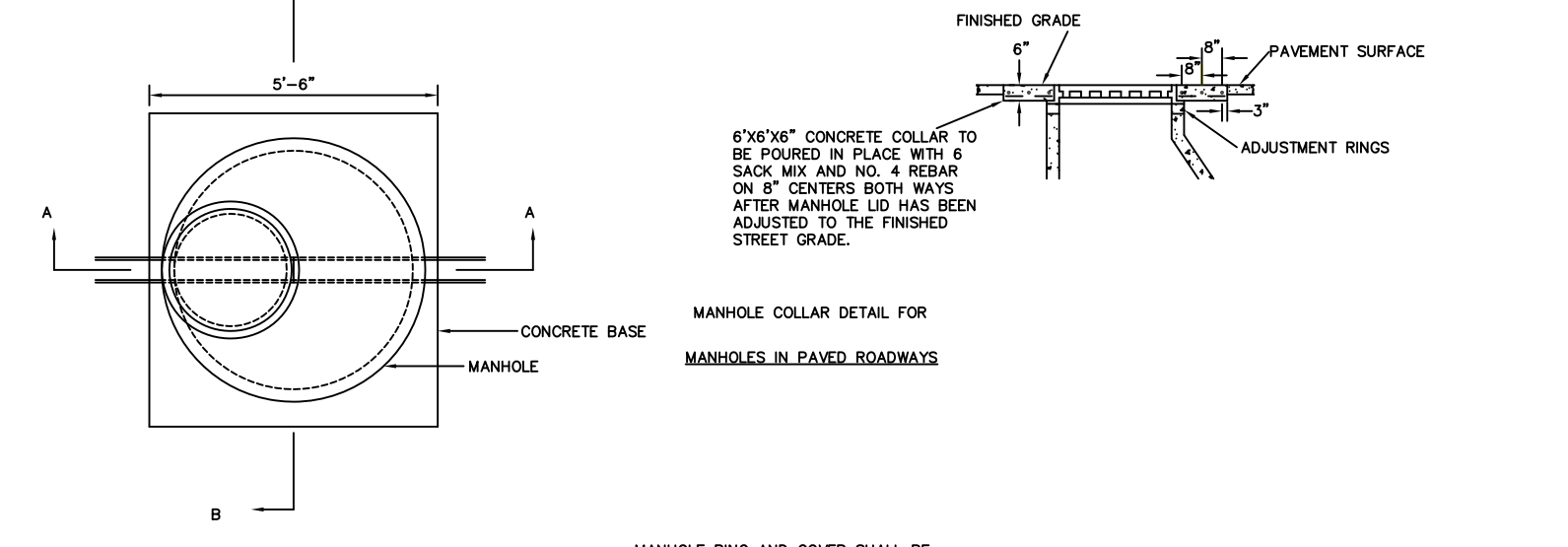
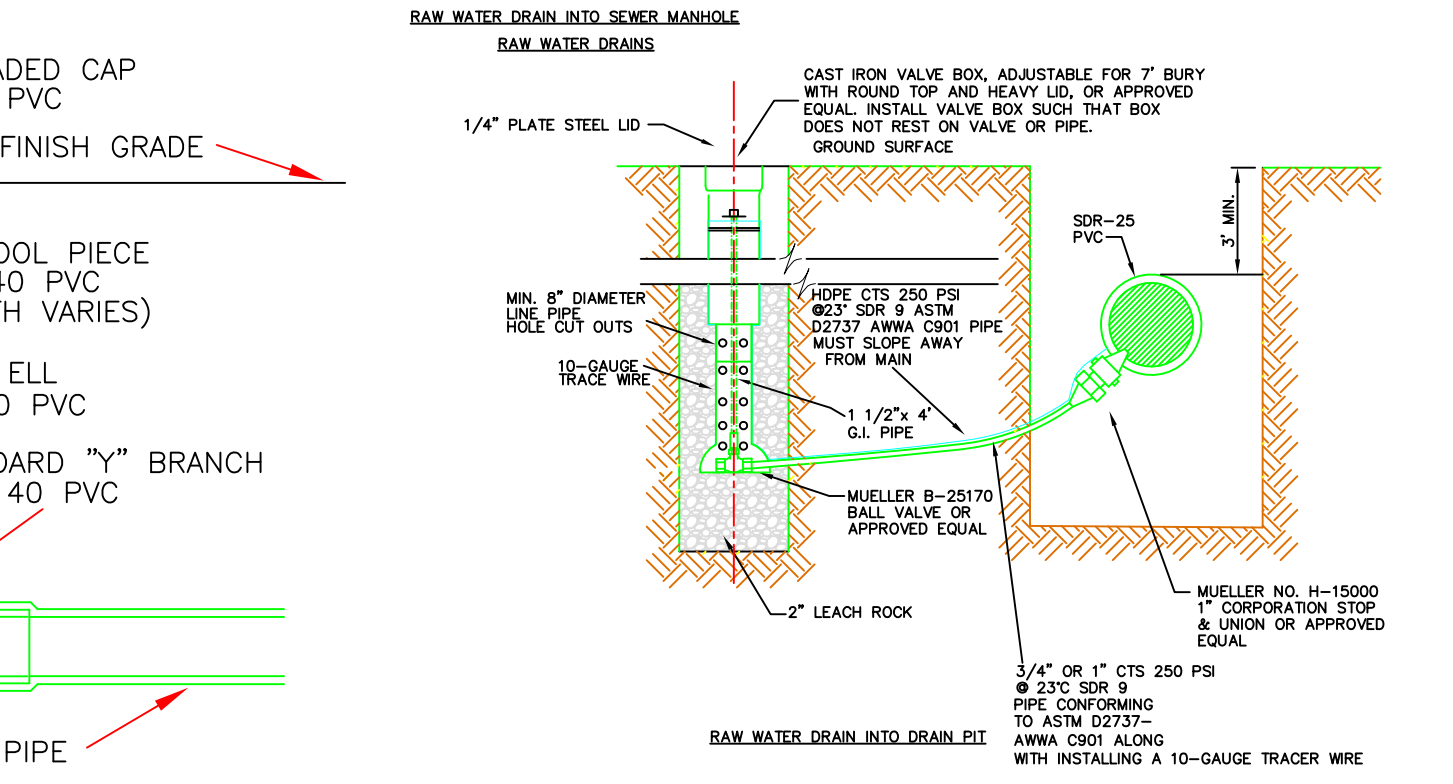
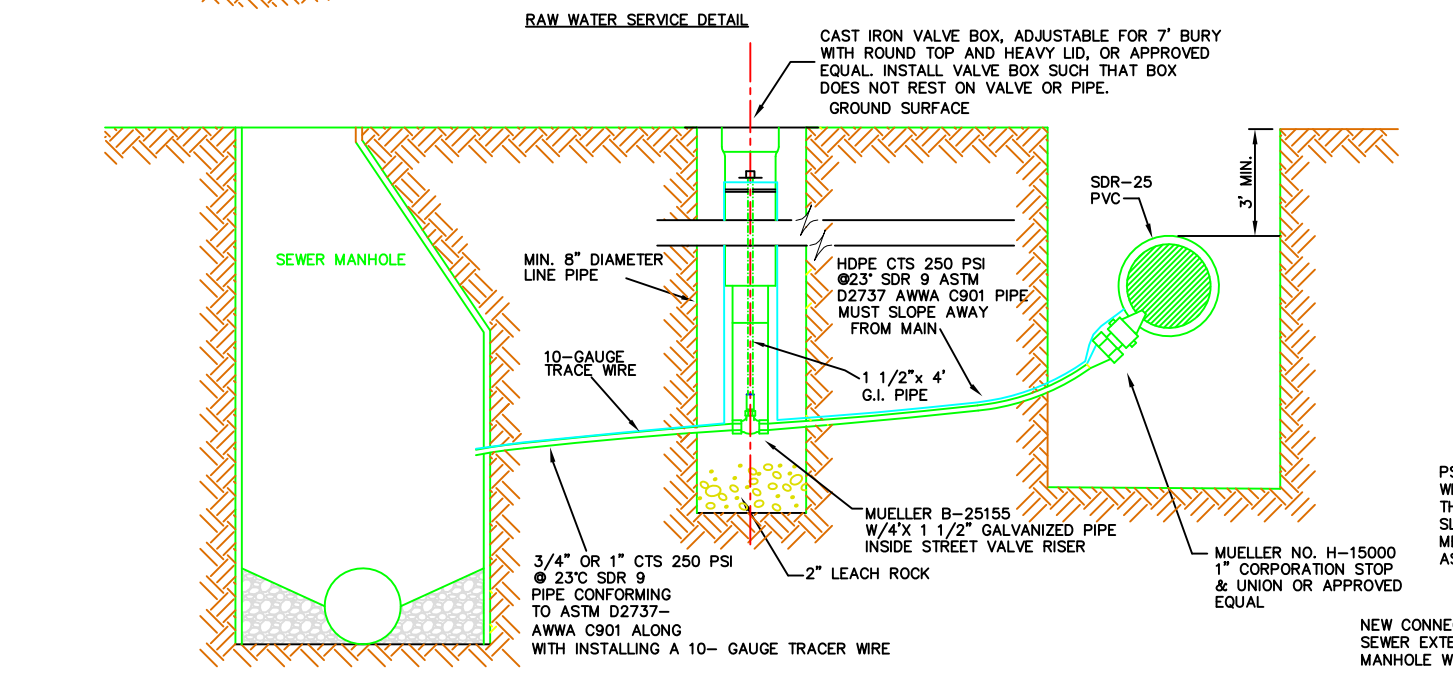
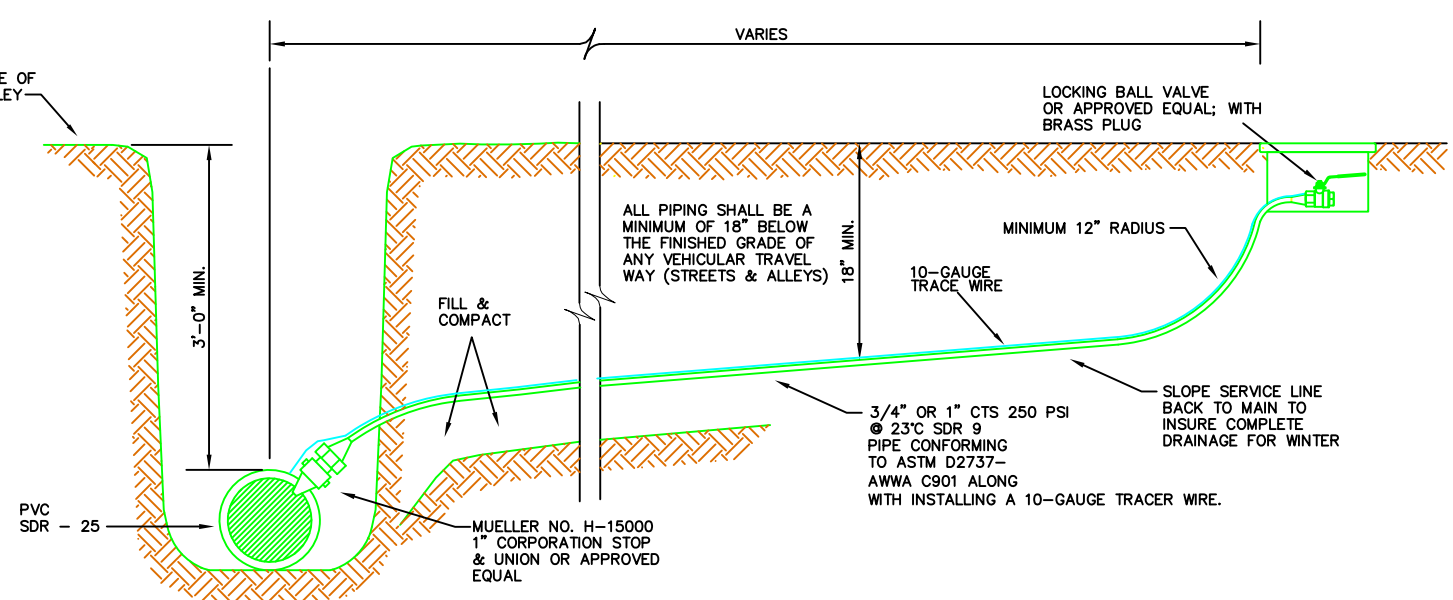
- TRACER WIRE SHALL TERMINATE INSIDE VALVE BOX WITH ENOUGH SLACK TO REACH 2' ABOVE GROUND SURFACE.
- ALL WIRE AND CABLE SHALL BE 10-GAUGE SOLID COPPER WIRE, WITH 600 VOLT RATED HIGH MOLECULAR WEIGHT POLYETHYLENE (HMWPE) INSULATION.



NOTE: 10' MIN. SLEEVEING MUST OCCUR ON EACH SIDE OF CROSSING.



- NOTES:
- DOUBLE BACKFLOW PREVENTION CHECK VALVES MUST BE INSTALLED FOR ALL RESIDENTIAL SERVICES.
 - PLEASE CONTACT THE CITY OF CODY FOR DETERMINATION OF NEEDS FOR COMMERCIAL SERVICES.



- MATERIAL SPECIFICATIONS**
- SANITARY SEWER PIPE SHALL BE POLYVINYL CHLORIDE BELL AND SPIGOT PIPE CONFORMING TO THE FOLLOWING:
 - PVC PIPE SHALL CONFORM TO CELL CLASSIFICATION 12454-B AS GIVEN IN ASTM D 1784.
 - DIMENSIONS OF THE PIPE AND FITTINGS SHALL CONFORM TO ASTM D 3034 OR ASTM F 679 FOR SIZES OVER 18\".
 - JOINTS IN ALL PVC SEWER PIPE SHALL BE WATER TIGHT WITH BELL AND SPIGOT ENDS WITH RUBBER O-RING GASKETS.
 - STANDARD PVC 7\"
 - PIPE FOR TREATED AND RAW WATER MAINS SHALL BE ANNA C-900 PVC DR18 CLASS 165 OR 235 BASED ON WATER MODELING.
 - FITTING FOR TREATED AND RAW WATER MAINS SHALL BE AS APPROVED BY THE CITY ENGINEER AND CONFORMS WITH THE WYOMING PUBLIC WORKS STANDARDS.
 - GATE VALVES SHALL CONFORM TO ANNA C500. VALVES SHALL BE RESILIENT WEDGE GATE VALVES WITH NON-RISING STEM, OPEN LEFT AND NOT OPERATED. THE VALVES SHALL HAVE MECHANICAL JOINT ENDS CONFORMING TO ANSI A21.1.
 - ALL WORK ASSOCIATED WITH THESE DETAILS SHALL CONFORM TO THE WYOMING PUBLIC WORKS SPECIFICATIONS.

CALL 1-800-849-2476
48 HOURS BEFORE YOU DIG



DRAWN BY: ULD
CHECKED BY: SMP
JOB NAME: CITY OF CODY WATER AND SEWER DETAILS
FILE NAME: H:\PUBLIC WORK\ENGINEERING\AUTOCAD UTILITIES\DETAILS
DATE: MARCH 13, 2009

NO.	DATE	BY	REVISION
1	6/26/09	ULD	ADD MANHOLE LID DETAIL
2	12/7/09	ULD	CHANGED CORE STEP INFORMATION, ADD PART NUMBER AND NOTES
3	5/17/08	ULD	ADDED BACKFLOW PREVENTION NOTE
4	6/29/08	ULD	REVISED THE RAW WATER SERVICE PIPE TYPE
5	3/14/07	ULD	ADDED TRACER WIRE TO TREATED WATER SERVICE
6	4/29/07	ULD	ADDED UPDATED INFO FOR SEWER AND TREATED WATER
7	3/24/07	ULD	ADDED TRACER WIRE TO RAW WATER SERVICE
8	1/14/06	ULD	ADDED THE MANHOLE COVER NOTE TO DETAIL
9	3/19/06	ULD	CORRECTED RAW WATER PIPE INFORMATION

WATER AND SEWER DETAILS
SHEET 3 OF 3